

# CONTOURE<sup>®</sup>

SPACE SAVER APPLIANCES

---

## TUMBLE DRYER

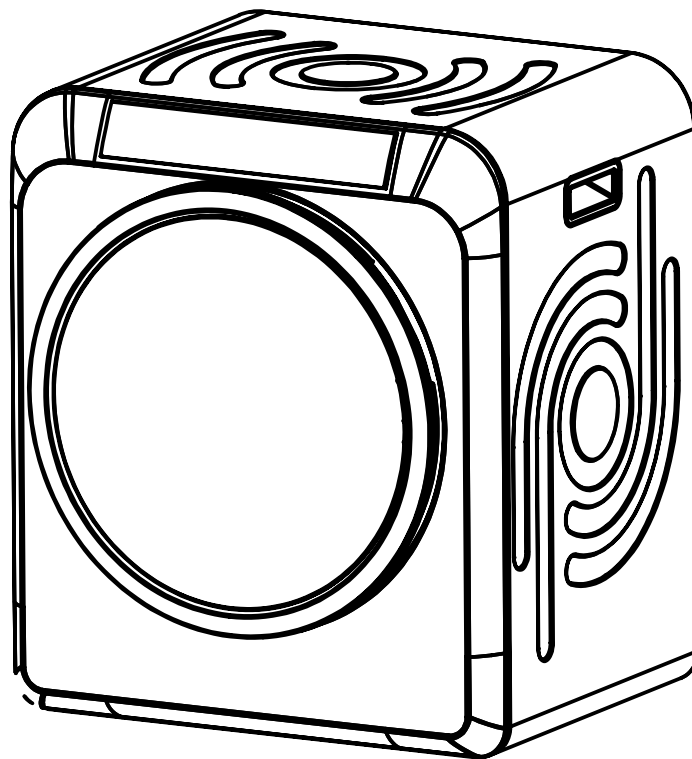
---

### INSTRUCTION MANUAL MODELS

---

DE-1400W (White)

DE-1400S (Titanium)



Before using your appliance, please read this manual carefully & keep it for future reference.  
The design and specifications are subject to change without prior notice for product improvement

THANK YOU  
FOR CHOOSING  
**TO BUY A CONTOURE®  
PRODUCT**

*Cleaning* with  
**CONTOURE®**

**PLEASE REGISTER  
AS A CONTOURE®  
OWNER!**

To help ensure you receive prompt and efficient service, please register your new CONTOURE® product. By completing your product registration, you are protecting your new investment and obtaining important warranty service information unique to your product. Please maintain your original proof of purchase for product and warranty service.

**REGISTRATION  
IS EASY -  
THE DETAILS:**

**Online:** To register your product visit our website [www.contoureusa.com](http://www.contoureusa.com) Under the "SUPPORT" tab you will find a link to the product registration page where you can complete a digital registration form.

**A FEW  
SMALLER  
DETAILS:**

If you have any questions about your new CONTOURE® product, please reach out to us directly via e-mail [[info@contoureusa.com](mailto:info@contoureusa.com)] or call our Customer Service Center directly. To submit a warranty claim or inquire about your product's warranty, please e-mail us [[warranty@contoureusa.com](mailto:warranty@contoureusa.com)].

**THANK YOU  
FOR YOUR  
PURCHASE!**

We guarantee that your new CONTOURE® product will perform to the highest quality standards that you rely on from the CONTOURE® brand.

Please do not hesitate to reach out to us if you need any assistance or have any questions about your new product.

Email [[support@contoureusa.com](mailto:support@contoureusa.com)] with your product Serial Number and details of where and when you purchased your product.

**SIGN UP  
& SAVE**

Find out first by joining our mailing list [www.contoureusa.com](http://www.contoureusa.com) Promotions, new products and sales directly to your inbox.

We value your business and hope you enjoy your new product!

# Table of Content

<b>Safety And Precautions .....</b>	<b>5</b>
<b>Important Safety &amp; Precautions .....</b>	<b>6</b>
<b>Installation Instructions .....</b>	<b>7</b>
Grounding Instructions .....	7
Name of Components .....	7
<b>Operating your dryer .....</b>	<b>8</b>
Control Panel Functions .....	9
Operation Precautions .....	10
<b>Operating Guide .....</b>	<b>12</b>
<b>Care and Manintenance .....</b>	<b>13</b>
Cleaning the Lint Filter .....	13
Cleaning of the Air Intake Filter .....	14
Cleaning the interior & exterior of the Dryer .....	14
<b>Troubleshooting .....</b>	<b>15</b>
Specifications .....	16

---

# Welcome & Congratulations

**Thank you for purchasing this quality  
CONTOURE® Electric Dryer.**

Congratulations on your new deluxe laundry  
appliance!

For your safety and full enjoyment of this  
product always read the instruction book  
carefully before using.

Don't forget to register your product at  
**[www.contoureusa.com](http://www.contoureusa.com)** for updates and  
other relevant information.

This manual contains important information on  
the installation use and care of your appliance.  
Please read this manual carefully before  
installation and operation of this machine to  
prevent injury and property damage and to  
take full advantage of your new dryer's benefits  
and features.



---

## Safety And Precautions

### Safety And Precautions

This manual contains important information on the installation, use, and care of your appliance. Please read this manual carefully before installation and operation of this machine to prevent injury and property damage.

### What You Need To Know About Safety Instructions

Warnings and Important Safety Instructions in this manual DO NOT cover all possible conditions and situations that may occur. It is your responsibility to use common sense, caution and care when installing, maintaining and operating your dryer.

### Important Safety Symbols And Precautions

#### **WARNING**

This indicates that hazards or unsafe practices may cause **serious personal injury or death**. To reduce the risk of fire, explosion, electric shock, or personal injury when using your dryer, these basic safety precautions **SHOULD** be followed.

### State of California Proposition 65 Warnings

The California Safe Drinking Water and Toxic Enforcement Act requires the Governor of California to publish a list of substances known to the State of California to cause cancer, birth defects, or other reproductive harm, and requires business to warn of potential exposure to such substances.

This product contains a chemical known to the State of California to cause cancer, birth defects, or other reproductive harm. This appliance can cause low-level exposure to some of the substances listed, including benzene, formaldehyde, and carbon monoxide.

## Important Safety & Precautions

### **WARNING**

To reduce the risk of fire, electric shock, or injury to persons when using your appliance, follow basic precautions, including the following:

- 1) Read all instructions before using the appliance.
- 2) Do not dry articles that have been previously cleaned in, washed in, soaked in, or spotted with gasoline, dry-cleaning solvents, or other flammable or explosive substances, as they give off vapours that could ignite or explode.
- 3) Do not allow children to play on or in the appliance. Close supervision of children is necessary when the appliance is used near children.
- 4) Before the appliance is removed from service or discarded, remove the door to the drying compartment.
- 5) Do not reach into the appliance if the drum is moving.
- 6) Do not install or store this appliance where it will be exposed to the weather.
- 7) Do not tamper with controls.
- 8) Do not repair or replace any part of the appliance or attempt any servicing unless specifically recommended in the user-maintenance instructions or in published user-repair instructions that you understand and have the skills to carry out.
- 9) Do not use fabric softeners or products to eliminate static unless recommended by the manufacturer of the fabric softener or product.
- 10) Do not use heat to dry articles containing foam rubber or similarly textured rubber-like materials.
- 11) Clean lint screen before or after each load.
- 12) Keep area around the exhaust opening and adjacent surrounding areas free from the accumulation of lint, dust, and dirt.
- 13) The interior of the appliance and exhaust duct should be cleaned periodically by qualified service personnel.
- 14) Do not place items exposed to cooking oils in your dryer. Items contaminated with cooking oils may contribute to a chemical reaction that could cause a load to catch fire.
- 15) To reduce the risk of fire due to contaminated loads, the final part of a tumble dryer cycle occurs without heat (cool down period). Avoid stopping a tumble dryer before the end of the drying cycle unless all items are quickly removed and spread out so that the heat is dissipated.
- 16) Do not install a clothes dryer with flexible plastic venting materials. If flexible metal (foil type) duct is installed, it must be of a specific type identified by the appliance manufacturer as suitable for use with clothes dryers. Flexible venting materials are known to collapse, be easily crushed, and trap lint. These conditions will obstruct clothes dryer airflow and increase the risk of fire.
- 17) To reduce the risk of severe injury or death, follow all installation instructions.

# Installation Instructions

## Grounding Instructions

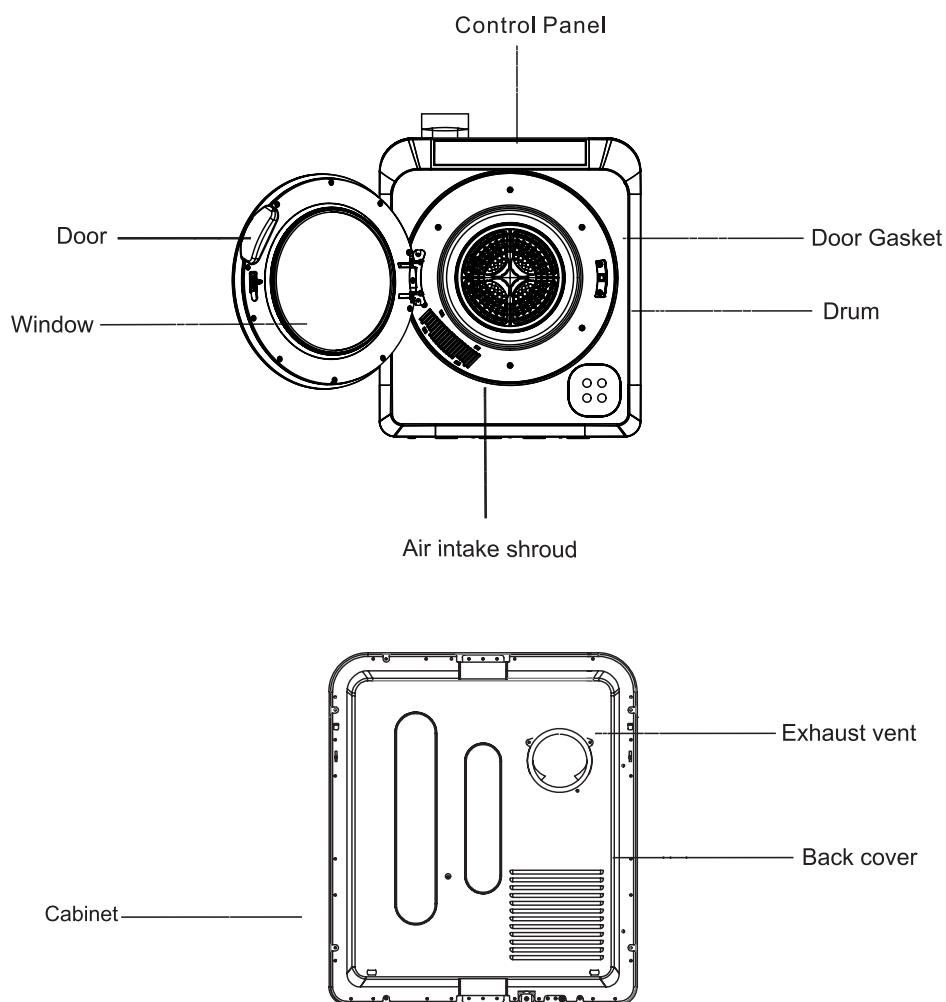
This appliance must be grounded. In the event of malfunction or breakdown, grounding will reduce the risk of electric shock by providing a path of least resistance for electric current. This appliance is equipped with a cord having an equipment-grounding conductor and a grounding plug. The plug must be plugged into an appropriate outlet that is properly installed and grounded in accordance with all local codes and ordinances.

## WARNING

Improper connection of the equipment-grounding conductor can result in a risk of electric shock. Check with a qualified electrician or service representative or personnel if you are in doubt as to whether the appliance is properly grounded.

Do not modify the plug provided with the appliance: if it will not fit the outlet, have a proper outlet installed by a qualified electrician.

## Name of Components

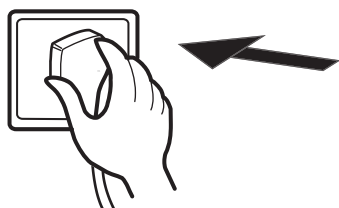


# Operating Your Dryer

## Electrical Requirements

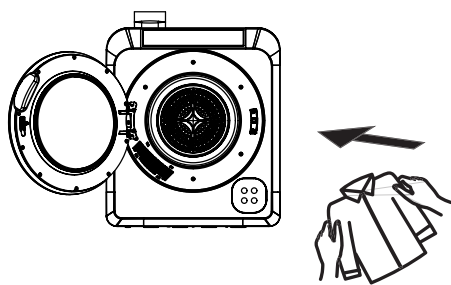
The unit is required to be plugged into a three pin socket that is reliably grounded.

The power supply must be 120V. Plug the powercord into the socket.



## Loading the dryer

It is recommended that items are placed into the dryer one by one at a time. This ensures they are not tangled which results in uneven drying. When closing the dryer door prior to starting the unit ensure that items are not jammed in the door.



## Tips before drying

Prior to loading the dryer check that the items do not have the following the symbols anywhere on them.



Dry flat



Dry in the shade



Do not tumble dry

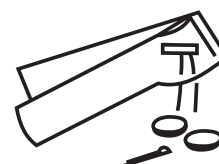


Hang to dry

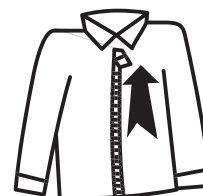


Drip dry

- Check the items to be dried do not have combustible materials or foreign objects within them ie: lighters, hair pins, coins.

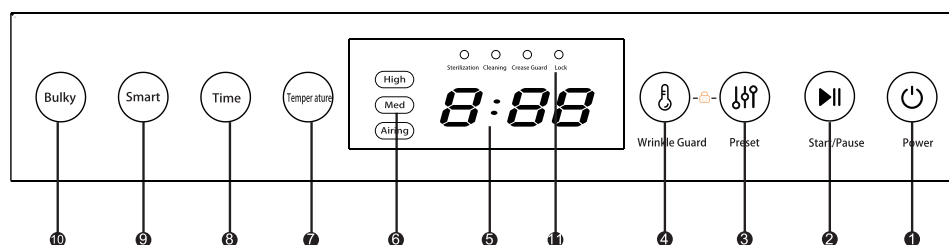


- Turn items with zippers inside out and fasten buckles.



- Dryer heat may permanently set stains, ensure you check prior to drying that stains are removed.
- Separate dark and light colored items as you would do when washing.
- For best results load the dryer with similar fabrics. Place small delicate items in a mesh bag and do not overload the dryer.
- The maximum mass is 13.2lbs of dry textile material for the dryer and do not overload. The tumble dryer is intended only for drying textile material washed in water.

## Control Panel Functions



1. Power
2. Start/Pause
3. Preset: Press "Preset" repeatedly to choose preset time from 1H, 2H, 4H and 8H, then press "Start/Pause" to start program, the preset time shown in display window will countdown by minute.
4. Wrinkle Guard: Press "Wrinkle Guard", the wrinkle guard indicator will light up and the dryer will reverse the rotation direction at the end of this drying cycle to improve drying efficiency. Press and hold "Wrinkle Guard" and "Preset" simultaneously for 3 seconds to lock the control panel while the dryer is operating. Press and hold both buttons at the same time for 3 seconds to unlock the setting.
5. Time Display: Estimated time remaining.
6. Temperature Indicator
7. Temp: Press "Temp" to choose temperature among High (high temperature), Med (medium temperature) and Air (air dry)
8. Time: Press "Time" repeatedly to choose drying time from 30 minutes, 1 hour, 1 hour and 30 minutes, 2 hours.
9. Smart: For lightweight items weight less than 3.5lbs. Default drying time is 47 minutes.
10. Bulky: For jackets, jeans, comforters and heavyweight items. Total loaded weight does not exceed 13lbs.
11. Door closing reminder: when the door is opened, it will display "E1" and return to normal after the door is closed

UV sterilization function introduction: after the countdown of the selected drying procedure, the dryer starts to carry out UV sterilization for 15 minutes, and the "sterilization" indicator lights up until the countdown is over. (in order to avoid the skin damage caused by ultraviolet rays, when the door of the clothes dryer is opened, the ultraviolet light will go out, and when the door is closed and continues to operate, it will light up again.)

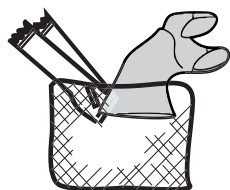
Cleaning indicator: This indicator will light up to remind to clean the lint filter. Wrinkle Guard indicator: This indicator shows "Wrinkle Guard" function is selected.

Lock indicator: This indicator shows the control panel has been locked.

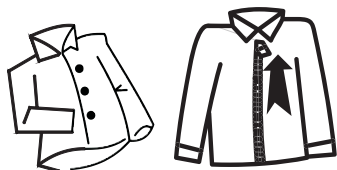
Program	Max volume of dry clothings	Max dry time	Clothings type
Extra	8.8-13.2 lbs	150min	Jeans, Cotton clothes, Sheet
Smart	3.5 lbs	47min	Cotton clothes
1hour	4.4 lbs	60min	Cotton clothes, Sheet

## Operation Precautions

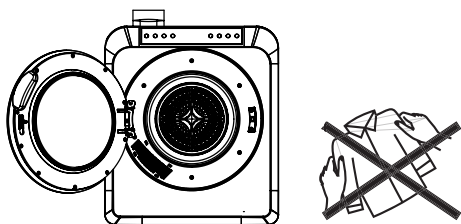
Delicate items should be placed into a nylon net bag prior to drying. It is not recommended to dry under wire bras in this unit.



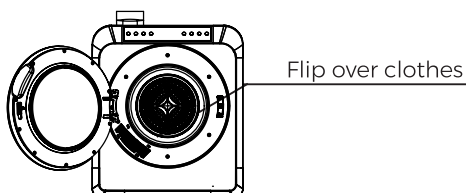
Ensure that foreign objects do not find way into the dryer. All pockets should be emptied, buttons, buckles and zips fastened. This will also help reduce impact noise when the items hit against the turning drum.



Do not add items into the dryer while it is in operation.



If drying large items such as a blanket, it is recommended that from time to time you open the dryer door, shake the item, place the item back in the dryer and close the door. This will ensure even drying



## Remove all objects from pockets such as lighters and matches.

If any of the below labels are on an items that you are going to place in the dryer, stop, do not, as the dryer may damage the item.



Dry flat



Dry in the shade



Do not tumble dry

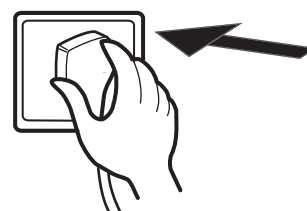


Hang to dry

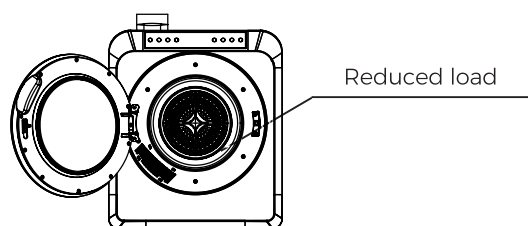


Drip dry

Electrical Requirements: A three pin socket must be used. (reliably grounded)



To ensure you get the most out of the Anti-wrinkle function do not overload the dryer and remove the dried items from the dryer immediately and hang on coat hangers. Iron the items if desired.



To minimize the risk of fire in a tumble dryer, the following should be observed:

- Items that have been spotted or soaked with vegetable or cooking oil constitute a fire hazard and should not be placed in a tumble dryer.

Oil-affected items can ignite spontaneously, especially when exposed to heat sources such as in a tumble dryer. The items become warm, causing an oxidation reaction in the oil. Oxidation creates heat. If the heat cannot escape, the items can become hot enough to catch fire. Piling, stacking or storing oil-affected items can prevent heat from escaping and so create a fire hazard.

If it is unavoidable that fabrics that contain vegetable or cooking oil or have been contaminated by hair care products be placed in a tumble dryer they should first be washed in hot water with extra detergent - this will reduce, but not eliminate, the hazard.

The 'cool down' cycle of tumble dryers should be used to reduce the temperature of the items. They should not be removed from the tumble dryer or piled or stacked while hot.

Items that have been previously cleaned in, washed in, soaked in or spotted with petrol/gasoline, dry-cleaning solvents or other flammable or explosive substances should not be placed in a tumble dryer.

Highly flammable substances commonly used in domestic environments include acetone, denatured alcohol, petrol/gasoline, kerosene, spot removers (some brands), turpentine, waxes and wax removers.

- Items containing foam rubber (also known as latex foam) or similarly textured rubber, like materials should not be dried in a tumble dryer on a heat setting.

Foam rubber materials can, when heated, produce fire by spontaneous combustion.

- Fabric softeners or similar products should not be used in a tumble dryer to eliminate the effects of static electricity unless this practice is specifically recommended by the manufacturer of the fabric softener or product.
- Undergarments that contain metal reinforcements should not be placed in a tumble dryer.

Damage to the tumble dryer can result if metal reinforcements come loose during drying. When available a drying rack could be used for such items.

- Plastic articles such as shower caps or babies' waterproof napkin covers should not be placed in a tumble dryer.
- Rubber-backed articles, clothes fitted with foam rubber pads, pillows, galoshes and rubber-coated tennis shoes should not be placed in a tumble dryer.



## Operating Guide

- In standby state, confirm the normal state is ok
- Open the door and put clothes in drum, the clothes weight should not exceed rated drying capacity for appropriate
- Close the door and check if these is clothes to be pinned by door
- Select program, according to actual need to choose the drying time / program
- Push start/pause button on the door and dryer start working
- Dryer stop work after one or two minutes, take out the dried clothes

### **WARNING**

Install the clothes dryer according to the manufacturer's instructions and local codes.

### **WARNING**

#### **Risk of Fire**

Clothes dryer installation must be performed by a qualified installer.

The installation of a residual current device (RCD) having a rated residual operating current not exceeding 30 mA is advisable in the electrical circuit. Ask your installer for advice.

Do not install a clothes dryer with flexible plastic venting materials. If flexible metal (foil type) duct is installed, it must be of a specific type identified by the appliance manufacturer as suitable for use with clothes dryers.

Flexible venting materials are known to collapse, be easily crushed, and trap lint.

These conditions will obstruct clothes dryer air flow and increase the risk of fire.

### **WARNING**

Risk of Fire. Do not install a booster fan in the exhaust duct.

Certain internal parts are intentionally not grounded and may present a risk of electric shock only during servicing. Service Personnel- Do not contact the following parts while the appliance is energized: PCB assemblies, heater, door interlock switch. To reduce the risk of severe injury or death. follow all installation instructions:

- a) that the appliance shall not be exhausted into a chimney, a wall, a ceiling, an attic, a crawl space, or a concealed space of a building;
- b) that only rigid or flexible metal duct shall be used for exhausting;
- c) in Canada, that only those foil-type flexible ducts, if any, specifically identified for use with the appliance by the manufacturer shall be used. In the United States, that only those foil-type flexible ducts, if any, specifically identified for use with the appliance by the manufacturer and that comply with the UL 2158A, shall be used;
- d) that the exhaust duct shall be 102 mm at least in diameter;
- e) that the total length of flexible metal duct shall not exceed 2.4 m.
- f) that the duct shall not be assembled with screws or other fastening means that extend into the duct and catch lint.



# Care and Manintenance

## Cleaning the Lint Filter

Please unplug the power cord prior to any cleaning. The lint filter must be in place whenever drying. It must be cleaned before each use.

### 1. Removing the filters

Remove by pulling outwards with fingers, inserted into the four holes around the exhaust vent shroud. The filter is in 3 parts: Exhaust vent shroud, lint filter and exhaust filter (as shown in Figure 1)

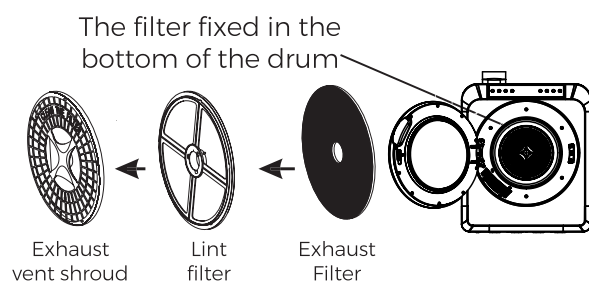


Figure 1

### 2. Cleaning the filter

Separate “exhaust vent shroud”, “lint filter” and exhaust filter”. Clean the lint on the lint filter and exhaust filter with a soft brush or vacuum cleaner. Do not damage the filters.

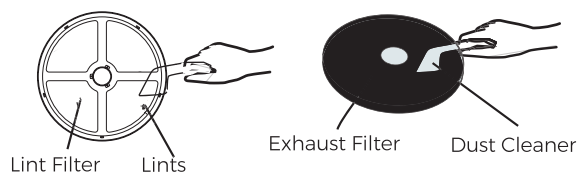


Figure 2

### 3. Re-installing the filter

After cleaning, assemble in the sequence of “exhaust filter-lint filter-exhaust vent shroud”, align the recesses in the center with the projection in the center of the drum. Make sure that it is firmly inserted (as shown in Figure 3).

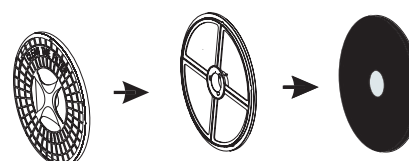


Figure 3

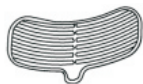
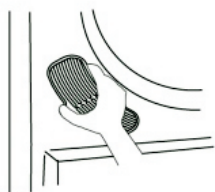
## ! NOTE !

The filter fixed in the bottom of the drum should also be cleaned with a soft brush.

## Cleaning of the Air Intake Filter

The filter should be cleaned once a month.

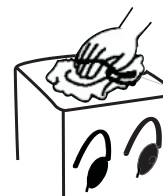
Remove by pulling outwards holding the upper and lower ends of the air intake shroud. Remove the filter inside the shroud and clean it with a soft brush. Reassemble and install as before.



Air Intake Filter

Clean cabinet with mild soap and water.

Do not use harsh or abrasive cleaners, this could damage the dryer.



## WARNING

Regularly clean the lint trap

Slightly push upwards with your thumb until the latch hook disconnects, then remove.

## Cleaning the interior & exterior of the Dryer

Do not wash directly with water.

Do not use thinner, gasoline or alcohol.

Do not use any type of spray cleaner when cleaning the interior. If dryer drum becomes stained, clean the drum with a damp cloth. Remove any residue before drying the next load.

## Troubleshooting

Review the following pages before calling for service

Problem	Possible Cause	What to do
Program does not work	<ul style="list-style-type: none"> <li>Is the power cord inserted firmly?</li> </ul>	<ul style="list-style-type: none"> <li>Insert the power cord firmly.</li> </ul>
Drum does not turn	<ul style="list-style-type: none"> <li>Is the door closed?</li> <li>Is the power cord inserted?</li> <li>Does the receptacle have power?</li> </ul>	<ul style="list-style-type: none"> <li>Close the door.</li> <li>Insert the power cord firmly.</li> <li>Check the power cord receptacle.</li> </ul>
Hot air is not blowing out	<ul style="list-style-type: none"> <li>Is the Program in correctly set on cold air?</li> </ul>	<ul style="list-style-type: none"> <li>Set the Program correctly</li> </ul>
The laundry is not thoroughly dried	<ul style="list-style-type: none"> <li>Are the front and back filters clogged?</li> <li>Is there too much laundry in the dryer?</li> <li>Have items been added while the dryer is in operation?</li> <li>Has the laundry become twisted while drying?</li> <li>Has the dryer been placed in a small and badly ventilated area?</li> </ul>	<ul style="list-style-type: none"> <li>Clean the filter.</li> <li>Reduce the amount in the dryer.</li> <li>Re-dry the items again.</li> <li>Untwist the items and re-dry.</li> <li>Place the dryer in a well-vented area.</li> </ul>
Dryer does not start	<ul style="list-style-type: none"> <li>Is there a power failure?</li> <li>Is the power cord inserted firmly?</li> <li>Is the door closed?</li> <li>Is the Program in the OFF position?</li> </ul>	<ul style="list-style-type: none"> <li>Try again when there is power</li> <li>Insert the power cord firmly</li> <li>Close the door</li> <li>Set the dry program</li> </ul>

## Specifications

<b>Model:</b>	DE-1400W/DE-1400S	<b>Drying Capacity:</b>	13.2lbs
<b>Voltage/Frequency:</b>	120V~/60Hz	<b>Rated Input:</b>	1300W
<b>Net Weight:</b>	59.4lbs	<b>Dimensions(inch):</b>	23 ½ x 20 x 27 inch

**NOTE:** Consistent with our continuing product development policy, improvements may have been made which render the contents of this package slightly different to that shown.

# Product Registration

## Product Registration Has Benefits :

Thank you for purchasing your new CONTOURE product!

By completing product registration you are protecting your new investment and obtaining important warranty service information unique to your product.

Registration also allows you to confirm ownership of your product by using registration as an official method of proof of purchase.

When registering your product you can choose to become a member of the CONTOURE team to receive exciting new product notifications, product use tips, unique product features and the latests updates and downloads about CONTOURE products and services.

## Register your CONTOURE Product:

We recommend that you visit our website, **<https://www.contoureusa.com/contoureproductregistration>** for a fast, efficient way to register your product online.

If you need help registering your product, or do not have access to the internet, a Customer Service Representative will assist you.

You may contact our Consumer Service Center toll-free at 1-888-656-9317.

Please maintain your original proof of purchase for product registration and warranty service.

## Product Warranty

This warranty is available to consumers only. You are a consumer if you own a CONTOURE product that was purchased at a retail store for personal, family or household use. Except as otherwise required under applicable law, this warranty is not available to retailers or other commercial purchasers or owners.

Warranty registration is not mandatory, but doing so will help us to service you more quickly if you need to present a warranty claim or notify you if there is a product recall. Please go online to submit your product registration form. Return of product registration does not eliminate the need for the consumer to maintain the original proof of purchase in order to obtain the warranty benefits. In the event that you do not have proof of purchase date, the purchase date for warranty purposes will be the date of manufacture.

NQP warrants CONTOURE Products ("product") to be free of all defects in material and workmanship for the applicable period specified below commencing from the date of original purchase. This warranty extends to the original buyer only.

### **Ninety (90) Day Full Warranty Parts & Labor:**

Within ninety (90) days from the date of original purchase, NQP/CONTOURE in its sole discretion, will either repair or replace, free of charge, any part proving defective in material or workmanship.

All warranty repairs and service must be performed at a NQP/CONTOURE location of service by an authorized NQP/CONTOURE technician. All expenses related to replacing or repairing a defective part under this ninety (90) day warranty shall be assumed by NQP/CONTOURE except the cost of transporting the

product to and from NQP/CONTOURE, which shall be assumed by the buyer. If the product is replaced, the replacement will be with a product that is identical or equivalent to the warranted product. If the product cannot be repaired or replaced, NQP/CONTOURE will issue a refund to the buyer for the original purchase price less that amount directly attributable to use by the buyer.

### **Disclaimer of implied warranties; limitation of remedies:**

Customer's sole and exclusive remedy under this limited warranty shall be product repair or replacement as provided herein. Claims based on implied warranties, including warranties of merchantability or fitness for a particular purpose, are limited to one year or the shortest period allowed by law, but not less than one year. NQP/CONTOURE shall not be liable for consequential or incidental damages such as property damage and incidental expenses resulting from any breach of this written limited warranty or any implied warranty. Some states and provinces do not allow the exclusion or limitation of incidental or consequential damage or limitations on the duration of implied warranties, so these limitations or exclusions may not apply to you. This written warranty gives you specific legal rights. You may also have other rights that vary from state to state.

### **One (1) Year Limited Warranty:**

After the expiration of the ninety (90) day warranty, and within one (1) year from the date of original purchase, NQP/CONTOURE NQP will replace any part proving defective in material or workmanship with a product that is identical or equivalent to the warranted part. The buyer shall assume the cost of transporting the

## Product Warranty

defective product to and from NQP/CONTOURE and will assume the cost of labor associated with repair.

### How to Obtain Warranty Service:

Upon discovery of any defect, malfunction, or nonconformity in the warranty-covered product, the buyer should visit

**www.contoureusa.com** and submit a warranty claim online.

For any questions regarding your warranty you may also email us at

**warranty@contoureusa.com**

### Notice to Buyer:

This warranty gives the buyer specific legal rights, and the buyer may also have other rights, which vary from state to state. You have the right to bring any action at law or equity to resolve disputes concerning or to enforce the provisions of this warranty. Every implied warranty, including any statutory warranty or condition of merchantability or fitness for a particular purpose, is disclaimed except to the extent prohibited by law, in which case such warranty or condition is limited to the duration and extent of this written warranty.

For added protection and secure handling of any CONTOURE product that is being returned, we recommend that you use a traceable, insured delivery service. NQP/CONTOURE cannot be held responsible for in-transit damage or for packages that are not delivered to us. Lost and/or damaged products are NOT covered under warranty. Please be sure to include your return address, daytime phone number, description of the product defect, product model number (located on the product), original date of purchase and any additional pertinent information pertaining to the product's return.

### Warranty Exclusions:

This warranty does not apply to any costs, repairs or services for the following:

- Products with original serial numbers that have been removed, altered or cannot be readily determined or products purchased "as-is."
- Product that has been transferred from its original owner to another party or removed outside of the USA or Canada.
- Products used in commercial setting(s).
- Service calls to correct the installation of the warranty-covered products, to explain the usage of the product to the buyer, or to reset or replace home circuit breakers or fuses.
- Service calls which do not involve malfunction or defects in materials or workmanship, or for appliances not in ordinary household use or used other than in accordance with the provided instructions.
- Repairs necessitated by use other than normal home use / Products used in commercial settings.
- Damage resulting from misuse, abuse, accidents, alterations, improper installation, fire, flood acts of God or damage caused by the shipping of the product by the buyer to NQP.
- Corrective work necessitated by repairs made by anyone other than a NQP authorized service technician / Rust on the interior or exterior of the unit.
- Costs incurred for disposing of the product at locations other than a NQP facility.

## Warranty Exclusions Continued

- Expenses for making the appliance accessible for servicing, such as removal of trim, cupboards, shelves, etc. which are not a part of the appliance when it is shipped from the factory.
- Damages to the finish of appliance or home incurred during installation, including but not limited to floors, cabinets, walls, etc.
- Damages caused by: services performed by unauthorized service companies; use of parts other than genuine CONTOURE parts or parts obtained from persons other than authorized service companies; or external causes such as abuse, misuse, inadequate power supply, accidents, fires or acts of God.
- Labor costs after ninety (90) days from your original date of purchase incurred for product repair or replacement as provided herein for carry-in appliances.

### This Warranty Only Applies in the USA and Canada:

In the United States and Canada, your appliance is warranted by NQP/CONTOURE. NQP/CONTOURE authorizes no person to change or add any obligations under this warranty. Obligations for service and parts under this warranty must be performed by NQP/CONTOURE or an authorized service company.

### California Residents Only:

California law provides that for In-Warranty Service, California residents have the option of returning a nonconforming product.

(1) to the store where it was purchased or (2) to another retail store which sells CONTOURE products of the same type. The retail store shall then, at its discretion, either repair the product, refer the consumer to an independent repair facility, replace the product, or refund the purchase price less the amount directly attributable to the consumer's prior usage of the product. If the above two options do not result in the appropriate relief to the consumer, the consumer may then take the product to an independent repair facility if service or repair can be economically accomplished.

NQP/CONTOURE and not the consumer will be responsible for the reasonable cost of such service, repair, replacement, or refund for nonconforming products under warranty.

California residents may also, according to their preference, return nonconforming products directly to NQP for repair, or if necessary, replacement, by calling our Consumer Service Center toll-free at 1-888-656-9317 or sending us an email, [warranty@contoureausa.com](mailto:warranty@contoureausa.com).

NQP/CONTOURE will be responsible for the cost of the repair, replacement, and return shipping and handling for such products under warranty.

### Copyright:

CONTOURE is a trademark of National Quality Products, LLC and its affiliated companies.

Registered in some countries.

Distributed by National Quality Products, LLC.

©2023 National Quality Products, LLC. All rights reserved.





---

VISIT **WWW.CONTOUREUSA.COM** FOR MORE

---

I.D.# 11152023